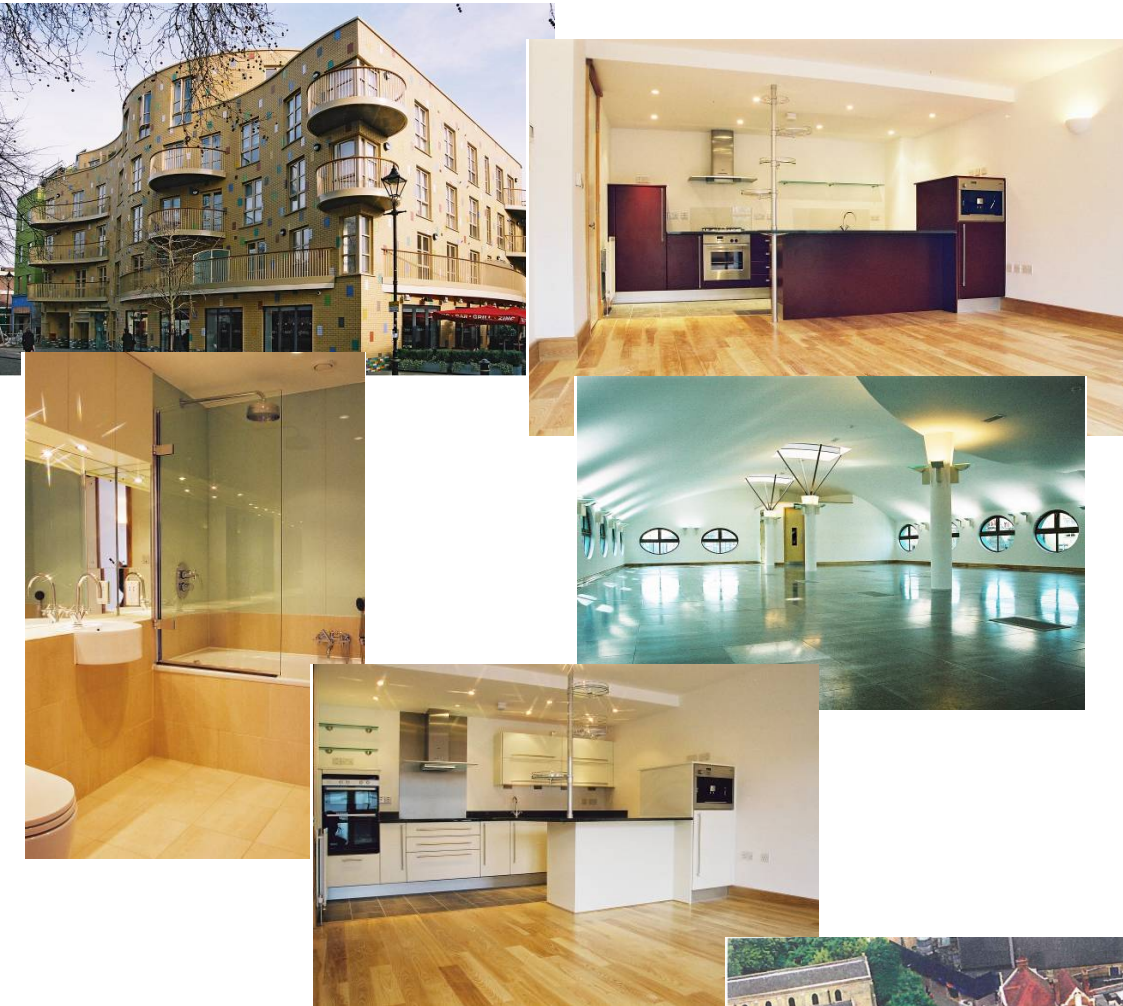


MIXED DEVELOPMENT

FULHAM ISLAND, LONDON SW6

This was a major development for Fulham Village Ltd and a major contract for HG Construction Ltd with its interesting architecture and clever use of space. It was a mixed use development constructed in the heart of Fulham on what is known as Fulham Island, the site was filled with buildings and was surrounded by roads and involved newbuild together with refurbishment of listed and other buildings. The development included retail areas, to both basement and ground floors, restaurant, offices and residential accommodation with basement car parking and a garden sanctuary at a first floor podium level isolated from the hustle and bustle of Fulham.

The basements were sheet piled and the frames of the buildings were carried up in concrete and steel: this was a complicated construction in terms of the interfaces of the buildings, the materials and the building uses.

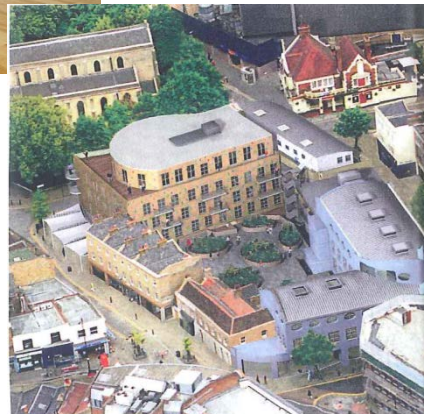


Client Fulham Village Ltd

Value £9.5 million

Consultants CZWG Architects
Alan Baxter & Associates

Duration 63 weeks



PROFILE

HG
CONSTRUCTION
LIMITED